

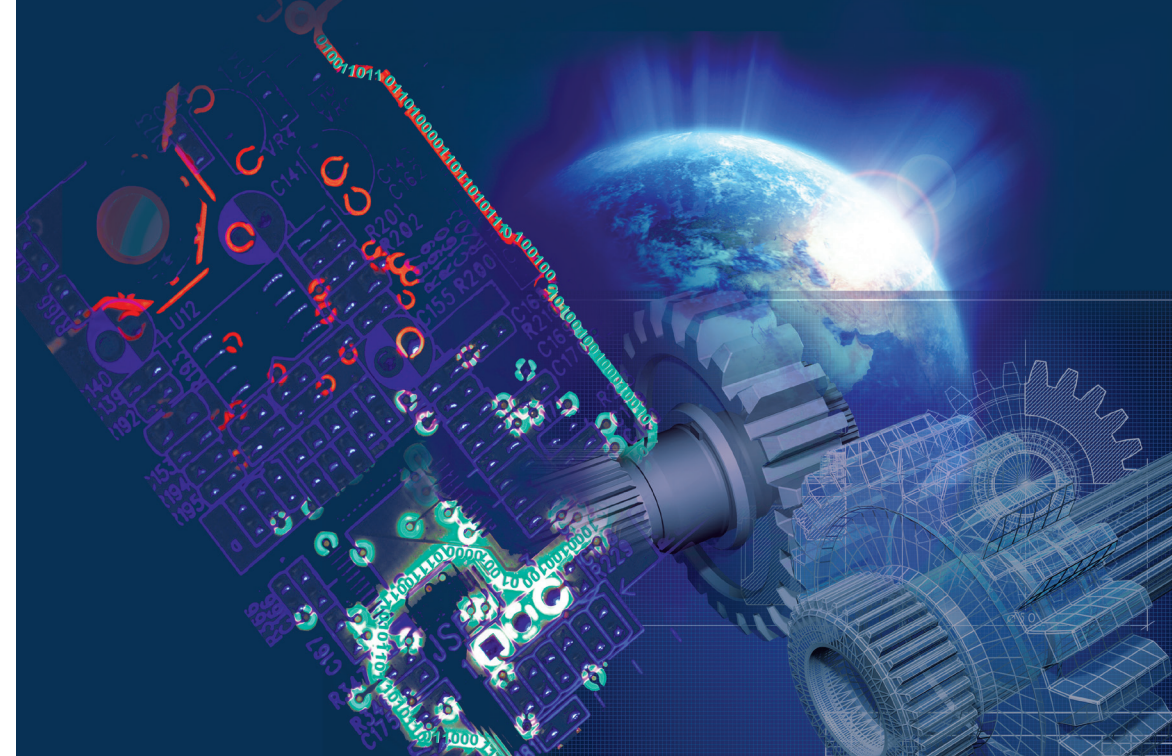
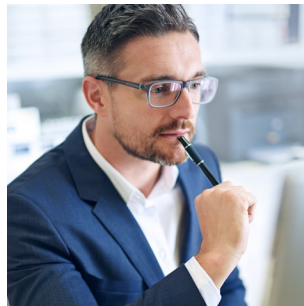
INNOVATIVE ENGINEERING



ZSI
WWW.ZSI.DE

Since 1972
successful
engineering services

There are numerous engineering service suppliers on the market. However, we are different because: We are **technical experts with a passion for engineering**



ZSI Service Sectors

Product development

- Electronic development
- Programming
- Product and tool construction

Plant engineering

- Hardware product planning
- Software product planning
- CAD construction and design

Project management

- Project responsibility
- Quality management
- Testing

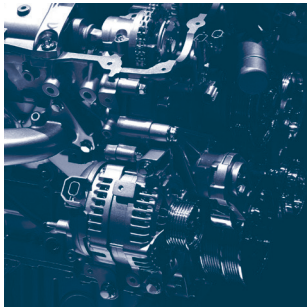
.....

Our staff members are very passionate engineers, technicians and technical experts and can deal with any complex, technical project and task they are faced with.

Our success is not only based on the qualifications and know-how of each employee, we also have a positive, constructive and cooperative working relationship amongst each other and with our customers. Social skills and competences, security due to a long-standing employee loyalty, as well as flexible management structures are not only milestones to us, but a living reality.

Reliability for our clients and customers has the highest priority to us since we do not only share the passion for engineering and technology.

We know what our customers want.
Not least because we understand their needs
and are able **to listen carefully.**



ZSI Service Sectors

Product development

- Electronic development
- Programming
- Product and tool construction

Plant engineering

- Hardware product planning
- Software product planning
- CAD construction and design

Project management

- Project responsibility
- Quality management
- Testing

.....

As an engineering company we are our customers' partner, and we put great emphasis on a close collaboration. This is the reason why we see and understand technical requirements in details. Together with our customers we are able to implement and realize them effectively and purposefully.

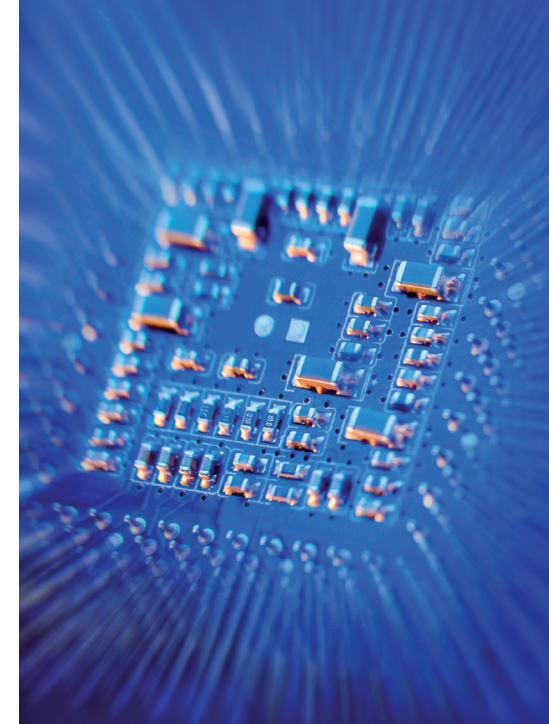
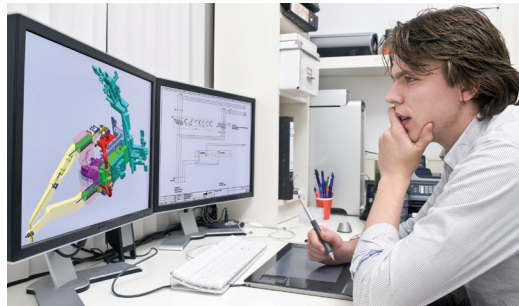
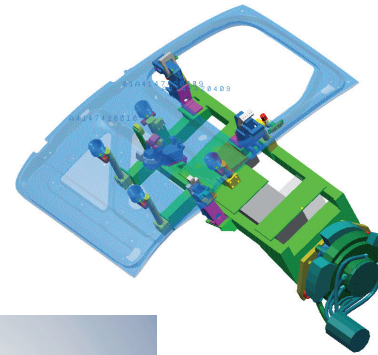
Communication between partners and cross-functional commitment are the basis for an efficient involvement of all ZSI services into the customers' organization.

Due to our qualified construction and development capability, as well as our long-term market and extensive industry experience, our customers benefit from short training periods, significant and fast project contribution and flexible planning.

ZSI Service Types

- Temporary employment
- Contract of employment
- Contract for services
- Provision of hardware and software, if requested

Experience and know-how in numerous industrial sectors: This is the basis, on which we continue developing our **Services**



ZSI Service Sectors

Product development

- Electronic development
- Programming
- Product and tool construction

Plant engineering

- Hardware product planning
- Software product planning
- CAD construction and design

Project management

- Project responsibility
- Quality management
- Testing

.....

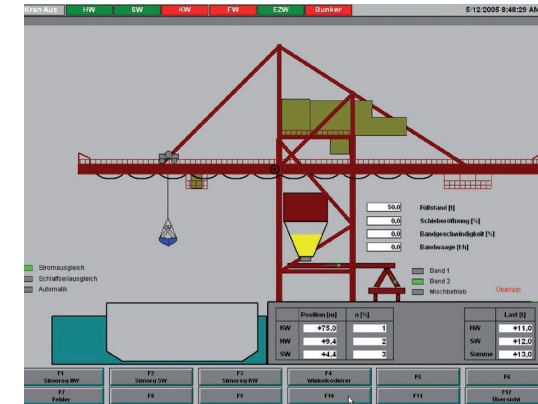
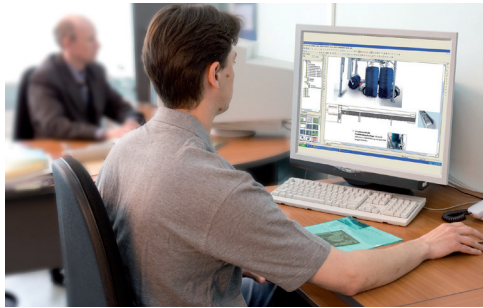
Challenging and demanding tasks in the field of product development do not only require technical competent staff members with experience and development capability, but also a flexible, permanently growing service organization. With us these parameters advance continuously: Our staff members grow with their constantly demanding projects and a cooperation covering all locations and competences. Technology is updated and tailored to suit a market need. And, the labor organization progresses through flexible services rendered at site (in the course of temporary employment as per AÜG or service contract), or as a work performance in ZSI Office near the customer.

We complete the project planning and development of our customers, and flexibly involve our staff's potential and project capacities, as requested and needed.

Involvement in product development

- Automotive
- Electronics
- Information technology
- Consumer goods industry
- Plastic technology
- Aerospace engineering
- Transformation technology
- Traffic engineering
- Tool technology

Experience and passion:
 For our demanding customer projects
 we have **the best establishments**



Involvement in plant engineering

- Drive technology
- Plant technology
- Tooling and equipment construction
- Material handling
- Electronics and automation technology
- Power engineering
- Handling technology
- Power plant technology
- Process control
- Customer-tailored mechanical engineering
- Process engineering
- Packaging technology

ZSI Service Sectors

Product development

- Electronic development
- Programming
- Product and tool construction

Plant engineering

- Hardware product planning
- Software product planning
- CAD construction and design

Project management

- Project responsibility
- Quality management
- Testing

.....

As a medium-sized service company we achieve national presence all over Germany. Therefore, we are able to support our customers with a project team at site.

ZSI Key Services in plant engineering:

- > Project planning and construction in plant engineering and steel construction, and piping engineering for the design of containers, fittings and other system parts for power plants, chemical and other industrial plants
- > CAD construction in customer-tailored mechanical engineering, material handling, aggregate construction
- > Hardware project planning and software development in automation technology, as well as in process control
- > Plant documentation, setting up of bid and tender documents
- > Project management and commissioning

Comprehensive concepts frequently consist of numerous details. A sure success requires the perfect **partner**



ZSI Service Sectors

Product development

- Electronic development
- Programming
- Product and tool construction

Plant engineering

- Hardware product planning
- Software product planning
- CAD construction and design

Project management

- Project responsibility
- Quality management
- Testing

.....

The bigger a project, the higher the risks. The purpose of the ZSI project management is to make them transparent, to reduce and if possible to avoid them at all. Experienced engineers take over project responsibility and coordination, set up reliable drawings for planning and controlling – and are even in charge of SOP.

ZSI Key Services in project management:

- > Project planning in automotive industry
- > Planning, controlling of development projects
- > Organization of program-related information flows, coordination of development levels, as well as SOP
- > make or buy-Studien
- > Deadline tracking, component releasing, FMEA
- > Risk analysis
- > Quality planning in development process
- > Testing

The ZSI Engineering service can stand up to any comparison. Excellent references are **perfect examples**



ZSI Service Sectors

Product development

- Electronic development
- Programming
- Product and tool construction

Plant engineering

- Hardware product planning
- Software product planning
- CAD construction and design

Project management

- Project responsibility
- Quality management
- Testing

.....

Product development, mechanical and plant engineering, technical project management: These are the central ZSI Key Services.

Qualified technicians and engineers are involved in the customer organization and take over challenging tasks in mentioned working areas.



Key customers benefitting from ZSI services in the fields of:

- > Industrial plants and power plant technology
- > Customer-tailored mechanical and plant engineering
- > Automotive
- > Traffic and aerospace engineering



With our customers
we look into the future
Together we can realize **visions**



The exceptional and fast development in many fields of technology makes us not believe that all has been developed yet. Right the opposite is true: New technologies and technological progress constantly offer new chances and perspectives.

We will not only keep the pace, but take progress in our hand. Our customers and we will continue to differentiate ourselves from emerging technology competitors.

However, top priorities for us are:

Professional competency and high commitment to understand our customer needs – as well as the motivation that is created through this.

www.zsi.de

ZSI Zertz + Scheid
Ingenieurgesellschaft mbH & Co. KG
Hardtstraße 2-4
51643 Gummersbach/Germany
Phone: +49 2261 3004-0
zsi@zsi.de

ZSI
WWW.ZSI.DE